



WHAT'S ON  
November 2023 – March 2024

Petersfield  
MUSEUM   
and ART GALLERY



We have a wonderfully exciting and diverse programme of exhibitions and events for you to enjoy. Featuring live music, theatre, talks, workshops and family days, there is so much to experience and enjoy. All information is correct at the time of publication, but events are subject to change. Visit our website for updates. Please note that outdoor events take place whatever the weather (unless considered dangerous)..

#### ABOUT US

Petersfield Museum and Art Gallery is an accredited, independent museum and registered charity. Established in 1999, it has recently undergone a £4 million redevelopment, supported by the National Lottery Heritage Fund. A rare example of a restored Victorian Justice Heritage site, its permanent collections include an Archaeology Collection and Social History Collection relating to Petersfield and the surrounding area, the Flora Twort Art Collection, a Photography Collection (including the Don Eades Photographic Archive) and a Fashion and Textiles

Collection (including the Bedales Historic Dress Collection), as well as a Reference Archive. The Flora Twort Gallery is a dedicated art gallery with an ambitious fine art and contemporary craft exhibition programme and an inclusive public programme. It is also home to the Tim Wilton-Steer Collection of works by and about the poet Edward Thomas, housed in The Edward Thomas Study Centre.

#### THE COFFEE SHOP

The Coffee Shop is situated in our beautiful Courtyard – a tranquil, secluded area of the Museum and Art Gallery that is perfect for catching up with friends or sitting back with a good book! It is a safe environment for your little ones to explore and play. Dogs are also welcome. Treat yourself to delicious coffee



*Lovely coffee.  
Helpful staff.  
(Coffee Shop Visitor)*

from local roastery Moon Roast or savour our smooth hot chocolate! For tea drinkers, why not try a traditional blend from Bird & Blend or a fabulous fruity alternative? A range of mouth-watering cakes and light savoury snacks are also served daily. All drinks and snacks are available for takeaway. There's something for everyone to enjoy! The Coffee Shop is open to everyone (admission tickets are not required). Simply walk through the green gate on the left side of the Museum and Art Gallery, into the Courtyard and the Coffee Shop is on your left. Opening times are Tuesday to Saturday, from 9.30am to 4.00pm.

#### THE SHOP

The products in our Shop take inspiration from our latest exhibitions, special collections, local history and the beautiful South Downs landscape. We are proud to offer an ever-changing range of locally sourced gifts, high-quality stationery, seasonal cards, unusual books, educational toys, and much more! The Shop is open Tuesday to Saturday, 10.00am to 5.00pm. You do not need to purchase admission to shop with us. Why not pop in to see what takes your fancy?



**Museum Shop Sunday**  
26 November | 11.00am–4.00pm

Join us as we officially launch our festive lines on Museum Shop Sunday. The Shop will be full of festive treats, free samples and Christmas cheer. Take the opportunity to explore our local, handmade and bespoke range of gifts and festive necessities for the whole family!





## THE EDWARD THOMAS STUDY CENTRE

The Edward Thomas Study Centre is the home of a collection of books, art, artefacts and other items reflecting the life and continuing influence of poet, writer and literary critic Edward Thomas.

Opening times are Wednesday and Thursday, 10.00am – 3.30pm. No admission ticket is required – Open to everyone.



*"A fascinating visit."*  
(Study Centre Visitor)



Picture by Gill Shaw

## EXHIBITIONS

Entry to temporary exhibitions are included in admission price.

### Nicholas Lees

#### Abstract Vessels

Flora Twort Gallery

Until 18 November 2023

Nicholas Lees is a sculptor based in Selborne. Working with porcelain clay, his abstract vessels involve a combination of processes, including wheel throwing, hand-building, lathe-turning, and carving. For this exhibition, a selection of Lees' sculptural works will be shown alongside his rarely seen works on paper. Through his sculptures and drawings, he explores the ephemerality and uncertainty of perception and how our visual experience of reality is conditional upon light, space and body.



Nicholas Lees, *Red Grail*, 2021,  
Parian porcelain and soluble gold,  
©The Artist

Book tickets: <https://www.petersfieldmuseum.co.uk/whats-on/exhibitions>



## EXHIBITIONS

### **Sarah Butterfield Dusk and Dawn in The Solent**

Flora Twort Gallery  
24 November 2023 – 24  
February 2024

Sarah Butterfield is a painter who works directly from nature and seeks beauty in contemporary environments. Often painting outside, she focuses on the effects of light and weather and revisits her subject matter under varying conditions. The series of oil paintings in this exhibition capture the vivid colours of dusk and dawn in The Solent.

*“Sarah Butterfield remains one of the most persistently rewarding artists of her generation and one who herself seems to be set upon an ever more creative journey.”*

(Jon Snow)



Sarah Butterfield, *Evening in the Solent*, ©The Artist

Book tickets: <https://www.petersfieldmuseum.co.uk/whats-on/exhibitions>

## EXHIBITIONS

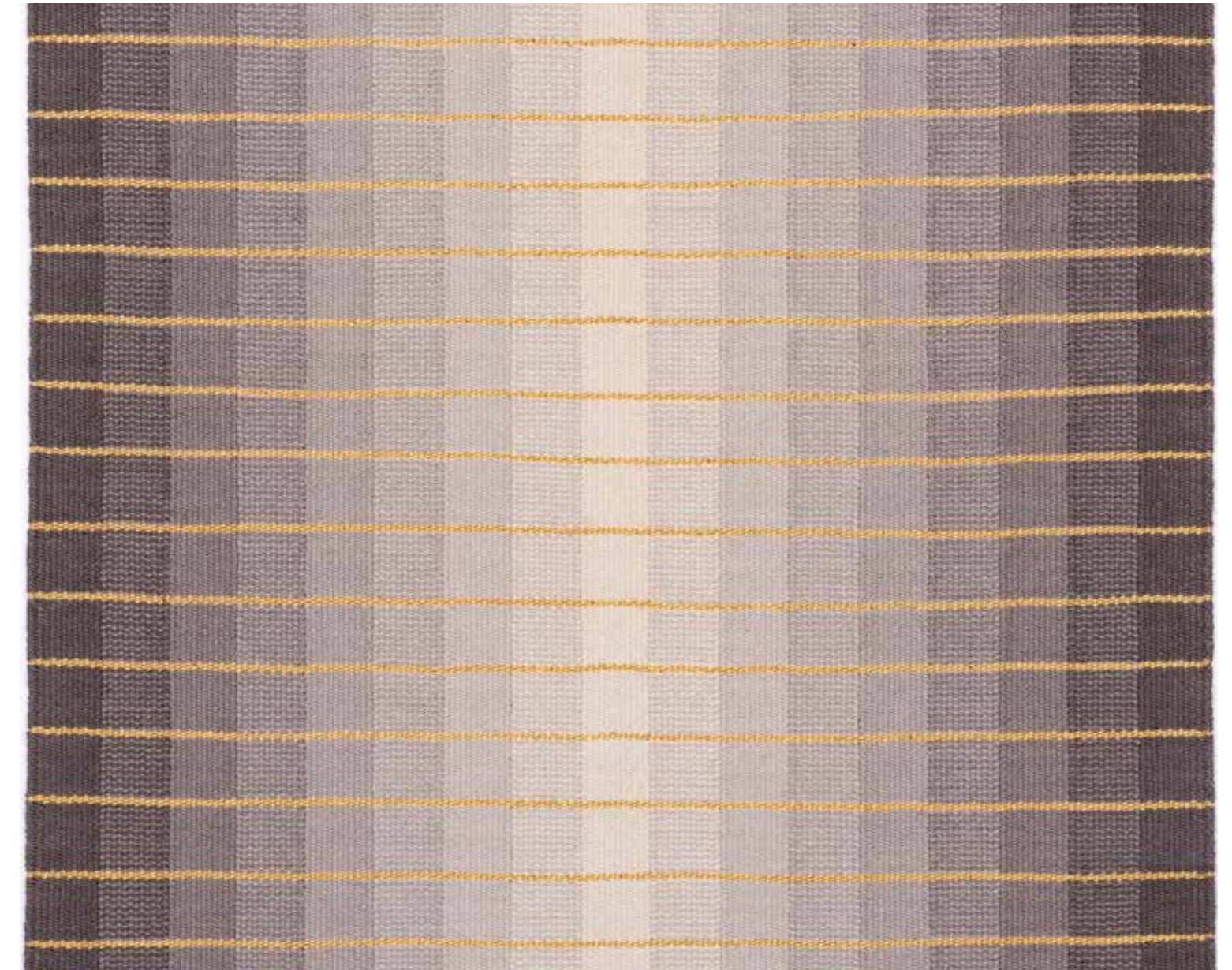
### **Katharine Swailes and Caron Penney The Language of Weaving**

Flora Twort Gallery  
5 March 2024 – 1 June 2024

Katharine Swailes and Caron Penney are internationally renowned artists creating wall-based artworks using the ancient technique of handwoven tapestry. Both Swailes and Penney are inspired by their time living and working in the Arun Valley, where they developed their unique approaches to the traditional skills of tapestry weaving.

*“As weavers, we are time travellers, following a path that has been trodden for millennia in the same way but ever different.”*

(Swailes and Penney)



Caron Penney, *Harmony*, © The Artist

Book tickets: <https://www.petersfieldmuseum.co.uk/whats-on/exhibitions>



## EXHIBITIONS



### **Gyles Brandreth An Exhibition of Fun and Fabulous Jumpers**

Standfield Gallery  
Autumn / Winter:  
Until 23 December 2023

The first-ever exhibition of colourful novelty knitwear as designed and worn by Gyles Brandreth.

Part two of this exhibition celebrates these distinctive joyous jumpers, from pantomime and rock and roll-inspired jumpers to Christmas trees and penguins. Gyles has been passionate about novelty knitwear for over 40 years. His sense of design and humour continues to entertain new audiences today.

*“Enjoyed seeing the jumpers – they are so colourful!”*  
(Museum and Art Gallery Visitor)

Book tickets: <https://www.petersfieldmuseum.co.uk/whats-on/exhibitions>

## EXHIBITIONS

### **Exploring Pattern: An Artist’s Response to the Fashion and Textile Collection**

Standfield Gallery  
23 January 2024 – 8 June 2024

Ebru Kocak is one of only a few artists working in the traditional artform of marbling. In 2023, Kocak was the Artist in Residence at Petersfield Museum and Art Gallery. Inspired by the floral patterns, distinctive shapes, and woven fabrics in the Fashion and Textiles Collection, Kocak created a new artwork titled *Now* (2023), marbling onto silk and viscose fabrics..

This artwork will be displayed alongside the items that inspired the work, including a 18th-century dress made from Spitalfields silk.

*“The past shapes our future and enables us to create something new and unique in the present.”*

(Ebru Kocak)



Book tickets: <https://www.petersfieldmuseum.co.uk/whats-on/exhibitions>

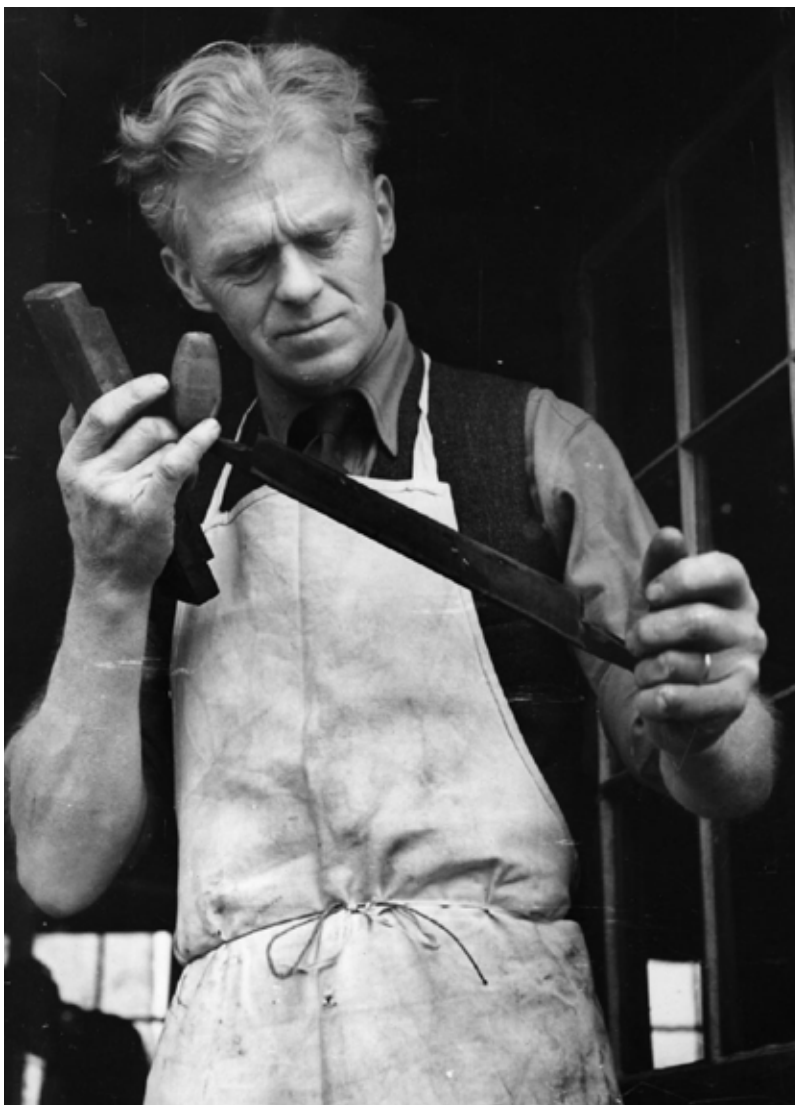


## EXHIBITIONS

### The Edward Barnsley Workshop 100 Years of Craft

Petersfield Gallery  
Until 23 December 2023

Edward Barnsley (1900-1987) was one of the most important British furniture designer-makers of the 20th century. Barnsley trained with Geoffrey Lupton (1882-1949), and in 1923, he took over Lupton's workshop in Froxfield, Hampshire. Barnsley believed in the importance of local materials, traditional techniques, and the contribution of the skilled maker to the success of a piece of furniture. Today, an Educational Trust provides much-needed support for the training of apprentices to continue Barnsley's legacy.



Pictures Courtesy of The Edward Barnsley Workshop



Designed by Edward Barnsley, Swing Mirror, 1979, Courtesy of a Private Collection

Book tickets: <https://www.petersfieldmuseum.co.uk/whats-on/exhibitions>

## EXHIBITIONS

### Life Through a Lens from the Photography Collection

Petersfield Gallery  
23 January 2024 – 8 June 2024

The Photography Collection contains over 10,000 photographs and picture postcards from the late 1800s to the present day. Ranging from personal family photographs to documentary images, they offer a fascinating record of social and architectural changes over the past decades and a glimpse of people's everyday lives.

This collection display delves into the Photography Collection to share images of some of the artists and art societies that have flourished in the Petersfield area.



© Petersfield Museum and Art Gallery

Book tickets: <https://www.petersfieldmuseum.co.uk/whats-on/exhibitions>



## ARTIST-LED WORKSHOPS

Welcoming artist-led workshops inspired by our exhibition programme. Learn a new skill, develop your artistic practice, and enjoy working in a small group within a setting that encourages creativity. All abilities are welcome, 14+, and the ticket price includes all materials.



### Painting Dusk and Dawn in The Solent with Sarah Butterfield

10 February 2024 | 10.30am-1.00pm (Arrive by 10.20am for a 10.30 start) | 14+ and all abilities welcome.

Tickets: £40 per person (Includes admission, an introduction to the exhibition and all materials)

Join acclaimed artist Sarah Butterfield in this artist-led workshop. Take inspiration from Sarah Butterfield's exhibition Dusk and Dawn in The Solent and enjoy time developing your creative approach to shape, colour, and composition within your painting. Suitable for all abilities. All materials are included. Please bring your own apron.

Book tickets: <https://www.petersfieldmuseum.co.uk/whats-on?type=28>



Picture by Ebru Kocak

### Paper Marbling Workshop with Ebru Kocak

9 March 2024 | 10.30am-1.00pm (Arrive by 10.20am for a 10.30 start) | 14+ and all abilities welcome.

Tickets: £60 per person (Includes admission, and introduction to the exhibition and all materials)

Let your imagination and creativity flow as you learn about the magical art of painting on water. Ebru Kocak is a leading artist working in the ancient art form of marbling. Her half-day workshop offers an introduction to paper marbling and the exciting opportunity to create beautiful, unique patterns. Ebru is particularly inspired by the patterns, fabrics and objects in our Fashion and Textiles Collection, and there will be images of these items available to inspire your creativity on the day.



Petersfield  
MUSEUM and ART GALLERY

# PEGGY GUGGENHEIM PETERSFIELD TO PALAZZO

15 JUNE 2024 - 5 OCTOBER 2024

TICKETS ON SALE NOW  
[PETERSFIELDMUSEUM.CO.UK](https://www.petersfieldmuseum.co.uk)

SUPPORTED BY



INCLUDES ARTWORKS FROM  
PEGGY GUGGENHEIM COLLECTION, VENICE

Peggy Guggenheim on the terrace of Palazzo Venier dei Leoni, Venice, early 1950s  
© Solomon R. Guggenheim Foundation, Venice, Photo Archivio Cameraphoto Epoche, Gift, Cassa di Risparmio di Venezia, 2005



## FAMILY EVENTS



### Festive Family Fun Day

22 December 2023

11.00am–4.00pm

Normal admission prices

Celebrate the holiday season with us! From festive crafts to snowball fights in the Police Cells, a rocking jingle disco to gingerbread man decorating in the Coffee Shop, there is so much fun to be had! Not to mention that Father Christmas will be making one of his final appearances before setting off to get ready for his busy night!



### Creative Saturday Family Workshops

Join our fun, hands-on workshops led by an experienced artist educator, Jo, from The Craft Zen. Spend time together as you develop your creative talents. Each session is inspired by one of our current exhibitions. Children must be accompanied by an adult. Suitable for all abilities

*“What a lovely way to spend a morning with our children. We all enjoyed learning new skills.”* (Participant, Creative Saturday)



### Pom-Pom Tote Bag

11 November 2023

10.30am–11.30am

Tickets: £8 per person (Includes admission and all materials)

Mix and match a colourful selection of hand-made pom-poms to create a 3D design to decorate a tote bag.

Inspired by *Gyles Brandreth: Fun and Fabulous Jumpers*.

## FAMILY EVENTS



### Christmas Decorations

2 December 2023

10.30am–11.30am

Tickets: £8 per person (Includes admission and all materials)

Paint, collage or print to create festive decorations for all your friends and family.

Inspired by *Sarah Butterfield: Dusk and Dawn in The Solent*.



### Stitch and Sew

24 February 2024 | 10.30am–

12.00pm

Tickets: £8 per person (Includes admission and all materials)

Create your own fashion-inspired patterns using a range of basic embroidery stitches.

Inspired by *Exploring Pattern: An Artist's Response*.



### Wild Weaving

30 March 2024 | 10.30am–12.00pm

Tickets: £8 per person (Includes admission and all materials)

Be a part of our communal wild weaving project and create your own woven artwork to take home.

Inspired by *Katharine Swailes and Caron Penney: The Language of Weaving*



## EARLY YEARS

We provide a range of interactive, creative learning sessions for children under 5 and their families. Designed alongside a child development expert and a teacher, the sessions improve children's well-being and promote the development of key skills. We would like to thank *The Charlotte Bonham-Carter Charitable Trust* for its generous support of our Early Years Programme.



*We visit every week, and the sessions are always brilliant – the kids love it!*

*Parent Participant,  
Museum Mischief  
Makers*

**Museum Mischief Makers**  
Mondays, except bank holidays  
| 10.00am–11.00am  
Check our website for exact dates and session themes.

Free to attend, but booking in advance is required.

Join us with your little ones for a unique opportunity to explore the Museum and Art Gallery in an interactive, sensory and sometimes messy way! Activities encourage complete freedom of expression. No rules - just fun!

**Toddler Takeover X: Santa's Crazy Christmas**  
18 December 2023 | 11.00am–4.00pm  
Normal admission prices | Children Under 5: Free

Celebrate Christmas with your Mischief Maker! Bust a move at Dasher's Dance, get creative with our festive crafts, enjoy a story told by Father Christmas, and get lost in the magic of our snowy Courtyard!



Book tickets: <https://www.petersfieldmuseum.co.uk/whats-on?type=26>

## LIVE MUSIC

Tickets are available to purchase on the door (subject to availability). To avoid disappointment, we recommend booking in advance. Our bar is open throughout each live music event.



Picture by Richard Shepherd

**Jon Walsh**  
17 November 2023 | 8.00pm–10.00pm  
(Doors Open: 7.30pm)  
Standard: £12 | Friend: £10 | Supporter: £10

Jon Walsh is the vocalist and lead guitarist of his own band – The Jon Walsh Blues Band. The band enjoys a reputation as being one of the most talented blues bands on the UK Blues Circuit. Jon brings the sounds of the Mississippi Delta and Piedmont Hills alive. His style covers a broad spectrum of blues, through to folk, country and gospel.

Book tickets: <https://www.petersfieldmuseum.co.uk/whats-on?type=21>



Picture by Alder Valley Brass

**Carols in the Courtyard**  
2 December 2023  
4.30pm–6.30pm  
(Doors Open: 4.00pm)  
The Courtyard (Outdoor Event)  
Adult: £8 | Friend: £7 | Supporter: £6 | Child: £4

Join Alder Valley Brass for a magical early evening of festive singing in our beautiful Courtyard! Our Coffee Shop will be serving mince pies and mulled wine.



Photo courtesy of Sydney Dejurey

**Sydney Dejurey**  
19 January 2024 | 7.30pm–10.15pm  
(Doors Open: 7.00pm)  
Adult: £12 | Friend: £10 | Supporter: £10

Sydney Dejurey is a singer-songwriter and multi-instrumentalist from Portsmouth. Her genre influences are dynamic and include pop, indie folk and electronic sounds. Sydney will be performing both popular covers and originals!



## LIVE MUSIC



### The Magic Violin Trio present Music from the Danube Regions

1 February 2024 | 8:00pm-10:15pm (Doors & Bar: 7.30pm) Standard: £15 | Supporter and Friend: £12

Join us for an enchanting evening with The Magic Violin Trio as they take us on a musical journey through Eastern European and Balkan regions along the Danube, with a touch of Ottoman cultural influence. Let the harmonies transport you from Donaueschingen in Germany, through Vienna and Budapest, and conclude at the Black Sea in Ukraine and Romania. This is a night of discovering the old world charm, with notes of history, migration, and cultural confluence.



Photo courtesy of Dean Dyson

### Dean Dyson

23 February 2024 | 7.30pm-10.00pm (Doors Open: 7.00pm)  
Adult: £12 | Friend: £10 | Supporter: £10

Dean Dyson is a poet-musician who has played many prestigious stages, from London's Barbican to the Bluebird in Nashville. In the tradition of performers such as Passenger and Ed Sheeran, he is also a serious busker with a huge repertoire of classical covers as well as original material from his four albums.



Photo courtesy of Amy Goddard

### Amy Goddard

1 March 2024 | 7.30pm-10.00pm (Doors Open: 7.00pm)  
Adult: £12 | Friend: £10 | Supporter: £10

Originally from South Wales and now based in Hampshire, Amy Goddard is a folk artist with a flair for story songs. Her vocals have been likened to Sandy Denny and Joni Mitchell for their clear, pure and almost fragile sound. Amy stands out as an artist across disciplines, designing her own album covers and even performing on a hand-crafted guitar.

*"Wonderful new singer-songwriter. One to watch!"*

(Frank Hennessy, BBC Radio Wales)

Book tickets: <https://www.petersfieldmuseum.co.uk/whats-on?type=21> Book tickets: <https://www.petersfieldmuseum.co.uk/whats-on?type=14>

## TALKS

Enjoy an informal and wide-ranging conversation with artists about their work. Take the opportunity to ask about their inspiration, techniques and their current exhibition.



Sarah Butterfield

### Meet the Artist: Sarah Butterfield

9 December 2023 | 11.00am-12.00pm  
Event included in admission price

Join us for this special event with artist Sarah Butterfield as she shares her experience of capturing the changing nature of light in her beautiful paintings. This is an informal talk that will take place in the exhibition gallery with the opportunity to view the exhibition with the artist.

Book tickets: <https://www.petersfieldmuseum.co.uk/whats-on?type=14>



© Anne Purkiss

### Meet the Artists: Katharine Swales and Caron Penney

30 March 2024 | 1.30pm-2.30pm  
Event included in admission price

Join us for this special event with artists Katharine Swales and Caron Penney as they share their experiences using the ancient technique of handwoven tapestry and their inspiration from life in the Arun Valley of West Sussex. This is an informal talk that will take place in the exhibition gallery with the opportunity to view the exhibition with the artist.



## THEATRE



Don't go into the Cellar Theatre

### A Christmas Carol

Presented by Don't Go Into The Cellar Theatre

20 December 2023 | Matinee: 2.30pm (Doors Open: 2.00pm),

Evening: 7.30pm (Doors Open: 7.00pm)

Adult: £12 | Child: £8

Join the great Victorian novelist Charles Dickens as he brings to life one of the most famous ghost stories of all time. A tale of revenants and redemption, hauntings and humbug, seasonal spooks and sentiment. Jonathan Goodwin performs as Dickens in this one-man performance, co-directed by Goodwin and Gary Archer. Suitable for children aged 11 and above

Book tickets: <https://www.petersfieldmuseum.co.uk/whats-on?type=23>



Lynchpin Theatre

### Emily Dickenson & I

Presented by LynchPin Theatre Company

8 February 2024 | 7.30pm–10.00pm

Adult: £15 | Friend: £14 | Supporter: £13

Movingly told and intensely personal, actress Edie Campbell tells the story of the attempt to produce the work that will capture Emily's essence 'using only Emily's words'. It's a play about writing, acting and getting into Emily Dickinson's dress.

*"Captivating – I recommend it unreservedly!"*  
(Margaret Drabble, Evening Standard)

## THEATRE

### Scotland Yard Investigates

Presented by Don't Go Into The Cellar Theatre

23 March 2024 | Matinee:

4.30pm (Doors Open: 4.00pm),

Evening: 7.30pm (Doors Open:

7.00pm)

Adult: £15 | Friend: £14 |

Supporter: £13

From the files of Scotland Yard come these startling stage adaptation of infamous true-life nineteenth century crimes. Faithful to the source material but employing a theatrical flourish, expect to be entertained and horrified in equal measure. Featuring dramatizations of the Thames Torso Murders, the Whitechapel Murderer and the Lambeth Poisoner, Dr Thomas Neill Cream!



Picture by Don't Go into the Cellar Theatre



## COFFEE SHOP EVENTS



Picture by Moon Roast

### Meet the Roaster

11 November 2023 | 4.00pm–6.00pm  
Standard: £12 | Friend: £10 | Supporter: £8

Come and meet the experts from Moon Roast. Learn about the sourcing and roasting process before enjoying a cup of their delicious coffee!



### Festive Latte Art Workshop

9 December 2023 | 4.00pm–6.00pm  
Standard: £50 | Friend: £40 | Supporter: £30

The Latte Art Workshop is back and more festive than ever! Join us to learn how to perfect the pour on your favourite espresso beverages. Our award-winning barista, Jack, will guide you through all the steps, from preparing and pulling the perfect shot of espresso to steaming silky milk. This time, though, we're sidestepping traditional latte art in favour of something more seasonal - come and see if you can pour a snowman or a reindeer on your festive latte!



### Meet the Barista: Coffee Tasting Experience

24 February 2024 | 2.00pm–4.00pm  
Standard: £12 | Friend: £10 | Supporter: £8

Come and join us for some coffee tasting! Our multi-award-winning barista, Jack, will guide you through the history of coffee, from Kaldi the Ethiopian goatherd to the modern day. You will explore some of the finest coffees from around the world and learn about brewing methods.

Book tickets: <https://www.petersfieldmuseum.co.uk/whats-on?type=28>

## COMMUNITY ENGAGEMENT

### Museum Elevenses

11.00am–12.30pm  
Free, drop-in monthly sessions  
(Museum admission not included)

Themes:

8 November 2023: Pubs of Petersfield  
13 December 2023: Christmas  
7 February 2024: ITS Rubber Factory  
6 and 9 March 2024: The Heath

Join us for a nostalgic look back in time as we explore images from The Don Eades Photographic Archive over a cup of tea or coffee. Don Eades was a local press photographer whose work captured the life of local residents from the 1960s to the 1980s. There will be printouts of the images shown on the screen for you to annotate with names and memories.

*“Very interesting – brings back memories!”*  
(Museum and Art Gallery Visitor)



© Petersfield Museum and Art Gallery



© Petersfield Museum and Art Gallery

### Relaxed Openings

4 November 2023, 2 December 2023, 3 February 2024 and 2 March 2024 | 9.00am–10.30am  
Normal admission prices | Booking in advance is recommended.

Explore our collections and galleries without any noisy interactives or videos. Members of our friendly team will be available to give you a warm welcome and to support your visit. At 10.30am, we open the doors to general admission and return to regular operation, however you are welcome to stay in the Museum and Art Gallery for as long as you like.

*“I have never been anywhere as accommodating as here. Nothing was too much trouble – asking for signs in Makaton and giving us a sensory backpack full of goodies to borrow. I wish other places were like this!”*  
(Museum and Art Gallery Visitor)

### Museum Photography Day

26 November 2023 | 11.00am–3.00pm  
Free admission | Booking in advance is recommended.

We need you! Come along and enjoy everything the Museum and Art Gallery has to offer as we are taking marketing images. These pictures will be added to our growing bank of marketing images to be used by the Museum and Art Gallery for publicity and communications. If you do not want your picture taken, you will need to pay normal admission and will be given a sticker to indicate to the photographer that you don't want your picture taken. There will be limited sessions for this event so book early to avoid disappointment.





## MEMBERSHIP

Join us today and enjoy access to an incredible range of benefits. As an independent museum and art gallery, we do not receive regular funding. Your generous support therefore helps us to maintain our collections for future generations.

### Became a **Friend** of Petersfield Museum and Art Gallery

#### Options

- Individual - £25 a year
- Student - £15 a year

#### Benefits

- Unlimited entry to the Museum and Art Gallery for the duration of your Friend membership
- Invitation to an exclusive Friend and Supporter event
- Discounts on selected Museum and Art Gallery events (*subject to availability and must be booked in advance*)
- 10% discount in the Shop at Petersfield Museum and Art Gallery (*exceptions apply*)
- 15% discount in the Coffee Shop at Petersfield Museum and Art Gallery (*exceptions apply*)
- Regular emails about events and exhibitions

To become a Friend or Supporter, please visit the Welcome Desk or buy online at [www.petersfieldmuseum.co.uk](http://www.petersfieldmuseum.co.uk)

<https://www.petersfieldmuseum.co.uk/support-us>

### Become a **Supporter** of Petersfield Museum and Art Gallery

#### Options

- Individual - £50 a year
- Individual and a Guest - £75 a year\*

#### Benefits

- Unlimited entry to the Museum and Art Gallery for the duration of your Supporter membership
- Invitation to an exclusive Friend and Supporter event
- Discounts on selected Museum and Art Gallery events (*subject to availability and must be booked in advance*)
- 10% discount in the Shop at Petersfield Museum and Art Gallery (*exceptions apply*)
- 15% discount in the Coffee Shop at Petersfield Museum and Art Gallery (*exceptions apply*)
- Free book loans from The Edward Thomas Study Centre at Petersfield Museum and Art Gallery
- Free participation in Museum walks and talks (*subject to availability and must be booked in advance*)
- Monthly treat in the Coffee Shop at Petersfield Museum and Art Gallery
- Invitation to special events
- Regular emails about events and exhibitions

*\*To access the benefits, your guest must accompany you to the Museum and Art Gallery.*

## VENUE HIRE

Petersfield Museum and Art Gallery has a number of rooms available for hire. If you're looking for space for a performance, meeting, party, christening, wedding reception or memorial, then we can help.

We can also provide catering options to keep your guests happy.

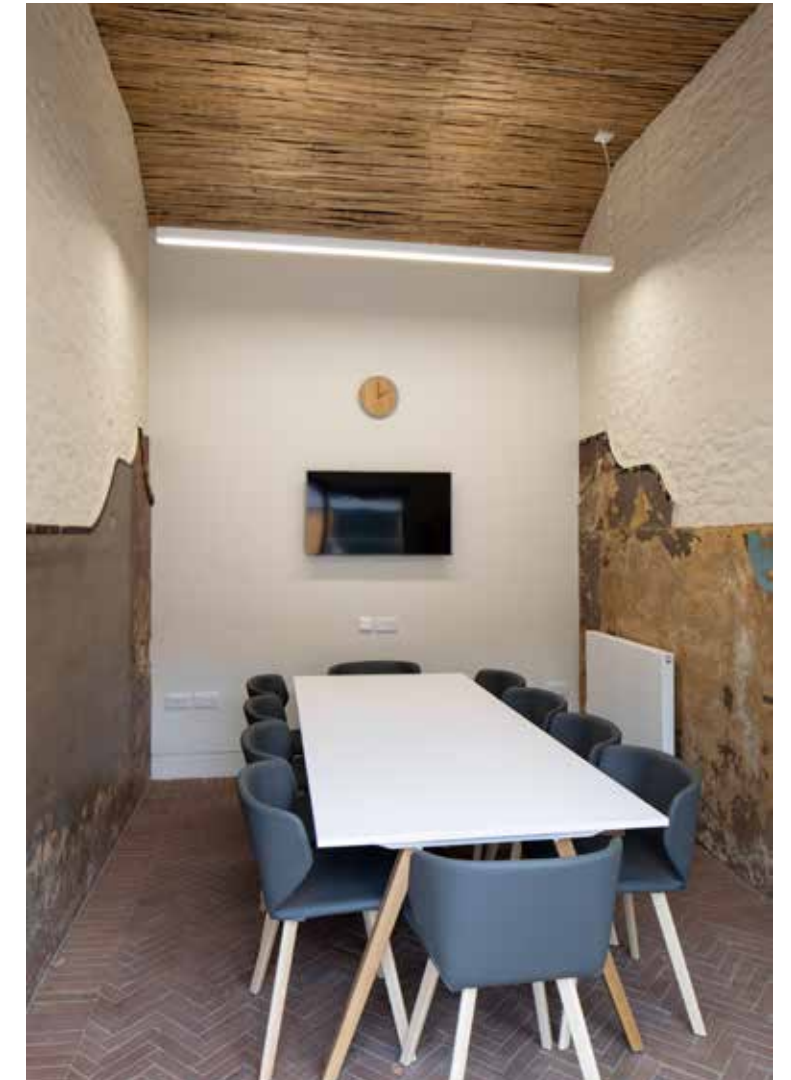
For further information, please contact [hospitality@petersfieldmuseum.co.uk](mailto:hospitality@petersfieldmuseum.co.uk) or call 01730 262601



The Courtyard. Picture by Richard Chivers



The Courtroom. Picture by Richard Chivers



The Meeting Room. Picture by Richard Chivers

<https://www.petersfieldmuseum.co.uk/venuehire>



## PLAN YOUR VISIT

### Opening Times

### Christmas and New Year

We close on Saturday 23 December 2023 at 5.00pm

### January 2024

The Coffee Shop, The Shop and The Flora Twort Gallery reopens on Tuesday 9 January 2024 at 10.00am

The Museum and Art Gallery reopens on Tuesday 23 January 2024 at 10.00am

### February 2024 – March 2024

Open Tuesday to Saturday, 10.00am–5.00pm (Last entry at 4.00pm).

### Tickets

Purchase admission and event tickets online at [www.petersfieldmuseum.co.uk](http://www.petersfieldmuseum.co.uk) or at the Welcome Desk in the Museum Shop.

All events have individual prices. Please check the What's On section of our website for more details.

### Admission Prices

Adults: **£8.00**

Age 60+ / Unwaged / Disability / Military / NHS: **£7.00**

*(Proof of discount may be required)*

Child (aged 5 -17): **£4.00**

Child Under 5: **Free**

Students: **£5.00** *(Proof of discount may be required)*

Carer / Companion: **Free**

The Art Fund: **£4.00**

Museum Association: **Free**

### Getting Here

Petersfield Museum and Art Gallery is housed in the old Police Station and Courthouse on St Peter's Road in the centre of Petersfield.

### Address

Petersfield Museum and Art Gallery, St Peter's Road, Petersfield, Hampshire, GU32 3HX

### By Car

Petersfield is easily accessible via the A3 or the A272. Parking is available at the nearby pay and display car parks by Tesco or Waitrose supermarkets.

### By Rail

Petersfield is easily accessible by rail, and the Museum and Art Gallery is only a 10-minute walk from Petersfield Station. Follow Lavant Street (opposite the station) exit to the end, and then turn right onto Chapel Street. This takes you out onto The Square. St Peter's Road is in the opposite corner of The Square, between Café Nero and St Peter's Church.

### By Bicycle

Petersfield is a great starting point for exploring the South Downs by bicycle. We have a range of South Downs leaflets and trails in the Shop to help you start your adventure!

### Accessibility

We want everyone who visits Petersfield Museum and Art Gallery to enjoy the building, collection and exhibitions. If you require any further information, please call 01730 262601.

### Wheelchair & Buggy Access

The Museum and Art Gallery site is fully accessible for wheelchair users and buggies, but at a certain point during your visit you will have to double back to avoid some stairs located at the end of the Petersfield Gallery. A member of staff will provide further guidance on your arrival.

A wheelchair is available free of charge from the Welcome Desk.

Wheelchairs/Buggies can be left near the Welcome Desk during your visit but are left at the owner's own risk.

### Hidden Disabilities

We welcome and support visitors who choose to wear a Sunflower item as part of the Hidden Disabilities Sunflower scheme. We have some Sunflower items available at the Welcome Desk if you would like to pick up something.

### Service Dogs

All service dogs are welcome throughout Petersfield Museum and Art Gallery.

### Accessible Toilet

There is an accessible toilet by the Welcome Desk near the main entrance, and also in the Courthouse.

### Baby-Changing Facilities

Baby-changing facilities are available in the accessible toilet in the Shop, and also in the Courthouse.

### Accessible Parking

There is one accessible parking space at the front of the Museum and Art Gallery which is available for visitors with mobility issues. Unfortunately, this space cannot be booked in advance.

### Seating

There are benches located around the Museum and Art Gallery where you can sit and contemplate, with further seating available in the Courtyard.

### Accessible Resources and Displays

A fixed hearing loop is available at the Welcome Desk. Large-print labels are available in each of the galleries and temporary exhibitions.

### SEND Resources

We offer several resources for visitors with SEND (Special Educational Needs and Disabilities). To access these, please visit: [www.petersfieldmuseum.co.uk/visit/accessibility](http://www.petersfieldmuseum.co.uk/visit/accessibility)

### Contact Us

[visitorexperience@petersfieldmuseum.co.uk](mailto:visitorexperience@petersfieldmuseum.co.uk)

Telephone: 01730 262601

Twitter: @PfieldMuseum

Facebook: @petersfieldmuseum

Instagram: @petersfieldmuseum





Petersfield  
**MUSEUM**   
 and **ART GALLERY**

Design: PAUL MARTIN STUDIO

Project support from Arts Council England



LOTTERY FUNDED