

FOR IMMEDIATE RELEASE

08/10/2024

South Downs Open



Sara Lee, *Nurture*, 2024, Pastel on paper. ©The Artist

Exhibiting nearly 150 works by over 120 artists, Petersfield Museum and Art Gallery's ***South Downs Open (22 October 2024-1 February 2025)*** is a spectacular way to celebrate the beauty of the South Downs. Visitors will be able to enjoy paintings, drawings, prints, photography, sculpture, textiles and ceramics that draw inspiration from across the South Downs region, from Old Winchester Hill in Hampshire to Beachy Head, in East Sussex.

South Downs Open has been selected from an open call to artists. Petersfield Museum and Art Gallery was delighted to receive hundreds of submissions, which reflects the inspiration the South Downs has for so many.

South Downs Open is a selling exhibition and a chance to acquire high-quality, affordable art from artists across the region.*

*Please note artworks purchased from *South Downs Open* will not be available for collection until after the exhibition concludes in February 2025.

It has been a great pleasure curating an exhibition with my fellow judges that showcases the incredible creative talent in Hampshire, Sussex and beyond.

Louise Weller, Head of Collections and Exhibition

The South Downs are a range of chalk hills spanning the counties of Hampshire, West Sussex, and East Sussex. Renowned for its rolling landscapes, chalk cliffs and diverse wildlife, this area is characterised by a mix of farmland, ancient woodlands, heathland and grassland, as well as historic towns and villages. The region is also well-known for its archaeological sites, including ancient hill forts and remnants of Roman and medieval settlements.



Allan Grainger, A View of Bullock Hill, 2020
Hahnemühle Print. ©The Artist

Few landscapes have spoken so potently to generations to transpose their inspirational and spiritual qualities into art. As Robert Macfarlane wrote, when thinking about the work of British artist Eric Ravilious, ‘this was the terrain – with its combination of human workedness and extreme age – that shaped his temperament and his sensibility.’

The selecting panel included Alison Crowther, a contemporary sculptor working in English oak based in the South Downs, Tiffany Francis–Baker, a Hampshire author and illustrator and Louise Weller, Head of Collections and Exhibitions at Petersfield Museum and Art Gallery.

I was so impressed by the breadth of work, from watercolour to woodcut and the woven to the whittled; they all in different ways voiced a strong message about landscape, nature and the beauty of the South Downs.

Alison Crowther: Artist

It was such a pleasure to be on the panel for the South Downs Open. Faced with the difficult task of choosing between so many outstanding pieces, I am confident the forthcoming exhibition will sparkle with a diverse range of extraordinary talents from across this beautiful corner of England.

Tiffany Francis–Baker: Author

South Downs Open
22 October 2024 – 1 February 2025
Petersfield Museum and Art Gallery
www.petersfieldmuseum.co.uk

South Downs Open presents nearly 150 artworks by over 120 artists, including paintings, drawings, artist’s prints, photography, sculpture, textiles and ceramics. These works were selected from an open call. Enjoy scenes from across the South Downs from Winchester Hill in Hampshire to Beachy Head, in East Sussex.

The *South Downs Open* is a selling exhibition and an opportunity to acquire high-quality, affordable art and support artists across the region. Find the full list of exhibiting artists on our website at www.petersfieldmuseum.co.uk.

Press Images



Chris Gilbert, *Windmill Hill*, 2018
Woodcut on paper ©The Artist



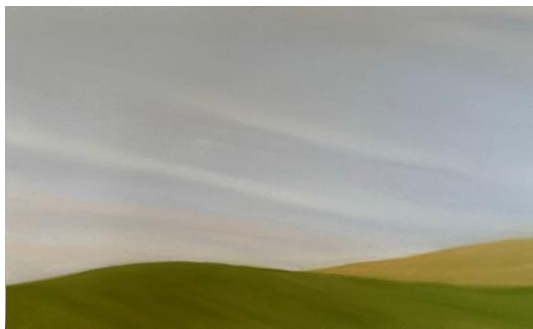
Allan Grainger, *A View of Bullock Hill*, 2020
Hahnemühle Print ©The Artist



Emma Lowres, *Cheesefoot Head*, 2024
Oil on board ©The Artist



Suzanne Winn, *Sky's Kiss*, 2023
Oil on canvas, ©The Artist



Sara Lee, *Nurture*, 2024
Pastel on paper ©The Artist



Jane Elliott-Renney, *Misty Morning*, 2018
Photograph ©The Artist

IMPORTANT INFORMATION

Press images are available from Molly Schmidt (Marketing and Communications Officer):
communications@petersfieldmuseum.co.uk

NOTES TO EDITORS

About Petersfield Museum and Art Gallery

Petersfield Museum and Art Gallery is housed in a rare example of a restored Victorian Justice Heritage site comprising the town's former police station and courthouse. Our collection displays include archaeology, social history, and photography relating to Petersfield and the surrounding area. Art, fashion, poetry, and literature are celebrated through exhibitions of items from the Flora Twort Art Collection and the Fashion and Textiles Collection, alongside a temporary exhibition programme. We are also home to the Edward Thomas Study Centre. Through our exhibitions and events, we believe in creating a cultural space for all, bringing people together and offering everyone the opportunity to enjoy history and the creative arts.

Website: www.petersfieldmuseum.co.uk

Instagram: www.instagram.com/petersfieldmuseum

Twitter: www.twitter.com/PfieldMuseum

Facebook: www.facebook.com/petersfieldmuseum

Visiting Petersfield Museum and Art Gallery

Opening Times: Tuesday to Saturday – 10.00am to 5.00pm (Last entry at 4.00pm).

Admission Prices:

Adults: £8.00 | Young People (5-17): Free | Children Under 5: Free

Concession tickets are available – please visit www.petersfieldmuseum.co.uk for more details.

Tickets:

To book admission and event tickets, please visit: www.petersfieldmuseum.co.uk

Visiting the Shop

Opening Times: Tuesday to Saturday – 10.00am to 5.00pm.

Open to the public, no museum admission required

Visiting the Coffee Shop

Opening Times: Tuesday to Saturday – 9.30am to 4.00pm.

Open to the public, no museum admission required

Located in the Petersfield Museum and Art Gallery courtyard