



WHAT'S ON  
October 2024 – January 2025

Petersfield  
MUSEUM   
and ART GALLERY

Join us as Petersfield Museum and Art Gallery spectacularly concludes our 25th anniversary year in celebration of the artistic community in the South Downs Open and our full festive event programme for the whole family. **The South Downs Open exhibition (22 October 2024 – 1 February 2025)** is a selection of artworks from our Call to Artists held earlier this year. We want to thank the hundreds of entries we received from artists across Hampshire, West Sussex and East Sussex in their reflection of what the South Downs mean to them. Our exhibition will contain over 100 works, including paintings, drawings, artistic prints, photography, sculpture and ceramics. Artworks showing will be available for purchase for our visitors and don't forget to vote for your favourite artist in for the People's Choice Award! Make the most of the festive season with our Halloween and Holiday events programme! Enjoy our spooktacular family and under 5's events, theatre productions by Don't Go Into the Cellar! and **Haunted Petersfield Walks**. For the winter holiday season, back by popular

demand, we will enjoy Christmas classics with **A Christmas Carol, Carols in the Courtyard and Toddler Takeover XII: Santa's Crazy Christmas**. Be sure to book on early to avoid any disappointment!

Discover our range of exhibitions and events in this What's On guide, explore our What's On page of our website to see our full range of events, and keep up to date with the latest information by joining our emailing list. All information is correct at the time of publication, but events are subject to change. Please note that outdoor events take place regardless of the weather (unless considered dangerous).

## ABOUT US

Petersfield Museum and Art Gallery is an accredited, independent museum and registered charity. Established in 1999, it has recently undergone a £4 million redevelopment, supported by the National Lottery Heritage Fund.

A rare example of a restored Victorian Justice Heritage site, our permanent collections

include an Archaeology Collection and Social History Collection relating to Petersfield and the surrounding area, the Flora Twort Art Collection, a Photography Collection (including the Don Eades Photographic Archive) and a Fashion and Textiles Collection (including the Bedales Historic Dress Collection), as well as a Reference Archive. The Flora Twort Gallery is a dedicated art gallery with an ambitious fine art and contemporary craft exhibition programme and an inclusive public programme. We are also home to the Tim Wilton-Steer Collection of works by and about the poet Edward Thomas, housed in The Edward Thomas Study Centre..

Discover more [www.petersfieldmuseum.co.uk](http://www.petersfieldmuseum.co.uk)  
Facebook [petersfieldmuseum](https://www.facebook.com/petersfieldmuseum)  
Instagram [@petersfieldmuseum](https://www.instagram.com/petersfieldmuseum)  
X [@PfieldMuseum](https://twitter.com/PfieldMuseum)

## THE COFFEE SHOP

**Open to the public Tuesday to Saturday | 9.30am-4.00pm | Seasonal menus**

What's a trip to the museum and art gallery without a morning latte or afternoon pot of tea to enjoy, alongside a delicious slice of cake? Discover our Coffee Shop located just off our Courtyard – an intimate venue where coffee meets culture!

Our Coffee Shop hosts a range of coffee and teas year-round with a selection of sweet and savoury treats. Try a classic or seasonal coffee, freshly brewed by local roasters. For something a little lighter, we have a range of teas and iced drinks. Follow the Coffee Shop Instagram to keep up to date with our seasonal selection of drinks and treats.

Find the Coffee Shop by walking through the green gate on the left side of the Museum and Art Gallery. We welcome everyone with a selection of kid-friendly snacks, toys and books, with the Courtyard available for your little ones to run around safely. Dogs are also welcome in the Courtyard and Coffee Shop.



## THE SHOP

**Open to the public Tuesday to Saturday | 10.00am-5.00pm |**

Find your one-stop shop for gifts in Petersfield at our Shop, located at the front of our Museum and Art Gallery. We host a range of products, taking inspiration from our latest exhibitions, special collections, local history and the beautiful South Downs landscape.

We proudly offer an ever-changing range of locally sourced gifts, high-quality stationery, seasonal cards, unusual books, educational toys, and much more! Follow our Facebook or Instagram to keep up to date with our latest seasonal products and offerings.



## Festive Thursday Late

7 November | 7.00pm – 9.00pm | FREE

Join us as we officially launch our festive lines on Museum Shop Sunday. The Shop will be full of festive treats and Christmas cheer. Take the opportunity to explore our local, handmade and bespoke range of gifts and festive necessities for the whole family!



## Museum Shop Sunday

1 December | 11.00am – 4.00pm

Shop with a purpose this festive season as we join 2,000+ other arts, heritage and cultural attractions for Museum Shop Sunday! The Shop will be full of festive treats and Christmas cheer. Take the opportunity to explore our local, handmade and bespoke range of gifts and festive necessities for the whole family!

## THE EDWARD THOMAS STUDY CENTRE

Open to the public Wednesday and Thursday 10.00am-3.30pm, or by appointment at other times

The Edward Thomas Study Centre is the home of a collection of books, art, artefacts and other items reflecting the life and continuing influence of poet, writer and literary critic Edward Thomas.

Attracted by the landscape and the South Downs, Thomas and his family lived in Steep, near Petersfield for ten years, from 1906 to 1916. Discover the life and times of Edward Thomas and see our library of poetry and prose holding works by and about the writer.



### Edward Thomas Literary Festival: Poetry, Prose and Birdsong

Celebrating the life and work of Edward Thomas, experience the beauty and power of poetry, focusing on themes of nature and birdsong.

See this and the following page...

Visit our website for event details and to book tickets.



### Now All Roads Lead to France Talk with Matthew Hollis

3 October 2024 | 7:30pm–8.30pm (Doors: 7.00pm)  
Tickets: Standard £10 | Museum Friend or Edward Thomas Literary Fellowship Member: £8 | Museum Supporter: £6

Join acclaimed poet and biographer, Matthew Hollis, as he shares Edward Thomas's life, literary journey, pivotal friendship with Robert Frost which inspired Edward Thomas's late but lasting poetry.



### A Whistling of Birds: Poetry-Art Workshop with Isobel Dixon and Douglas Robertson

4 October 2024  
11.00am–1.00pm  
Tickets: Standard £30.00 | Students £25.00

Join poet Isobel Dixon and artist Douglas Robertson for a lively poetry-art workshop inspired by nature and nature-loving creators over the centuries. Over the course of two-hour workshop there will be chance to listen, reflect, engage in conversation and turn your own hand to some writing, drawing and/or making. Writers and artists of abilities are welcome!



### The Spirit of the Song - A talk by Seán Street

4 October 2024 | 7:00pm–8.00pm (Doors: 6:45pm)  
Tickets: Standard £12 | Museum Friend or Edward Thomas Literary Fellowship Member: £10 | Museum Supporter: £8

Seán Street, calling on his own background as a sound practitioner and radio feature maker, celebrates the prose of Edward Thomas in this auditory experience. Explore the interpreted signals of the natural world through sound and poetry.



### Poetry Open Mic at the Museum!

4 October 2024 | 8:15pm–10.00pm (Doors: 8:00pm)  
Tickets: Standard £6

Take centre stage in our first-ever Poetry Open Mic Night! Join us for this special evening as we host distinguished poets, Ellora Sutton and Jessica Mookherjee for poetry performances before we turn the mic over to you! We invite any poet who is looking to share their work or anyone who enjoys poetry readings to this event.



### Creative Saturday: Inspired by the Word

5 October 2024 | 10.00am–11.00pm

Free to attend, but booking in advance is required. Create your own unique artwork in response to the written word! Be inspired by the words of Edward Thomas, T.S Elliot, Julia Donaldson and more and craft your own artwork based on how it makes you feel!



### Three Lovely Notes: The Poetry of Birds and Birdsong with Yvonne Reddick

5 October 2024 | 10:00am–11:30am  
Tickets: Standard £45 | Museum Supporter or Friend or Edward Thomas Fellowship Member: £40

From robins to lyrebirds, poets are fascinated by birds and birdsong. Join poet Yvonne Reddick in this writing workshop to explore Edward Thomas works, contemporary poetry, and think about how we can use birdsong to shape our own poems.

Book tickets: <https://www.petersfieldmuseum.co.uk>



### A Brunch of Poets

5 October 2024  
11:30am-1:00pm  
Tickets: Standard £12 | Museum Friend or Edward Thomas Fellowship Member: £10 | Museum Supporter or Under 18: £8

Include Museum and Art Gallery admission

Grab a cup of coffee with a piece of cake and enjoy readings from award-winning poets in a relaxed setting. We will be talking surrealism, nature writing and inspirations as well as hearing readings from poets such as Jess Mookherjee, Ellora Sutton, Sarah Doyle, Timothy Adès and Isobel Dixon.



### Macavity and Friends: Performance Poetry

5 October 2024  
1.30pm-2.30pm  
Free to attend, but booking in advance is required.

Experience the magic of verse from T.S Elliotts' 'Macavity' and poetry readings, great for all ages!



### An Afternoon of Poetry

5 October 2024  
3:00pm-4:30pm  
Tickets: Standard £12 | Museum Supporter or Friend or Edward Thomas Fellowship Member: £8  
Include Museum and Art Gallery admission

Relax and unwind with a calm afternoon of poetry readings from renowned poets including Michael Longley, Yvonne Reddick, Jessica Mookherjee and Sarah Doyle.



### The Notes that Did So Haunt Me - Birdsong, Song and Sound in Edward Thomas's Poetry with Edna Longley

5 October 2024  
7:00pm-8:00pm  
Tickets: Standard £12 | Museum Friend or Edward Thomas Fellowship Member: £10 | Museum Supporter: £8 | Student: £5

Join literary critic, cultural commentator and Edward Thomas scholar, Edna Longley in this special talk centred around birds and poetry as 'song' in works by Edward Thomas and W. B. Yeats.



### 'Unteaching': Thomas on teaching and teaching on Thomas

5 October 2024  
8:30pm-9:30pm  
(Doors: 8:15pm)  
Tickets: Standard £12 | Museum Friend or Edward Thomas Fellowship Member: £10 | Museum Supporter or Under 18: £8

Join Professor Guy Cuthbertson as he reflects upon his experience of teaching Thomas's poetry and prose at universities and discuss Edward Thomas's thoughts about school, university and teaching.



### In Their Footsteps - Edward Thomas

6 October 2024  
10:30am-1:00pm  
Intermediate Walk: 5 miles with places of difficult terrain  
Free to attend, but booking in advance is required.

Take part in this walk through the landscape of Edward Thomas, culminating at his memorial 'The Poets Stone'. There will be opportunities to stop along the way and reflect on the work and life of Edward Thomas as well as the beauty of the surrounding countryside.



### 2 Poets 1 Conversation with Andrew Motion and Alice Oswald

12 October 2024  
6:00pm-7:00pm | Digital Event  
Tickets: Standard £10 | Museum Friend or Edward Thomas Fellowship Member £8 | Museum Supporter or Student £5

Join former Poet Laureate, Sir Andrew Motion, and award-winning poet, Alice Oswald, for an intimate and open conversation. Starting with a reflective look at their own poetry, the use of birdsong in poetry including readings and discussions about the written word and shared admiration for Edward Thomas.



### Friends from Across the Pond - The Natural World in the Work of Thomas and Frost

12 October 2024  
7:30pm-9:30pm | Digital Event  
Tickets: Standard £10 | Museum Friend or Edward Thomas Fellowship Member £8 | Museum Supporter or Student £5

Immerse yourself in the friendship of Edward Thomas and Robert Frost in this evening of friendly discourse between members of the Edward Thomas Fellowship and the Robert Frost Society.

Book tickets: <https://www.petersfieldmuseum.co.uk>

Book tickets: <https://www.petersfieldmuseum.co.uk>

## EXHIBITIONS & COLLECTION DISPLAYS

Entry to all exhibitions is included in the admission price and is available to pre-book online or at our Welcome Desk located in the Shop. Concession tickets are available.



22 October 2024 –  
1 February 2025  
Included in admission price

South Downs Open includes nearly 150 artworks by over 100 artists, including paintings, drawings, artist's prints, photography, sculpture, and ceramics. These works were selected from an open call to artists whose work is inspired by the South Downs.

South Downs Open is a selling exhibition. It is a chance to acquire high-quality, affordable art and support artists.

\* Please note that artworks purchased from the South Downs Open will only be available for collection after the exhibition concludes in February 2025.

Book tickets: <https://www.petersfieldmuseum.co.uk>

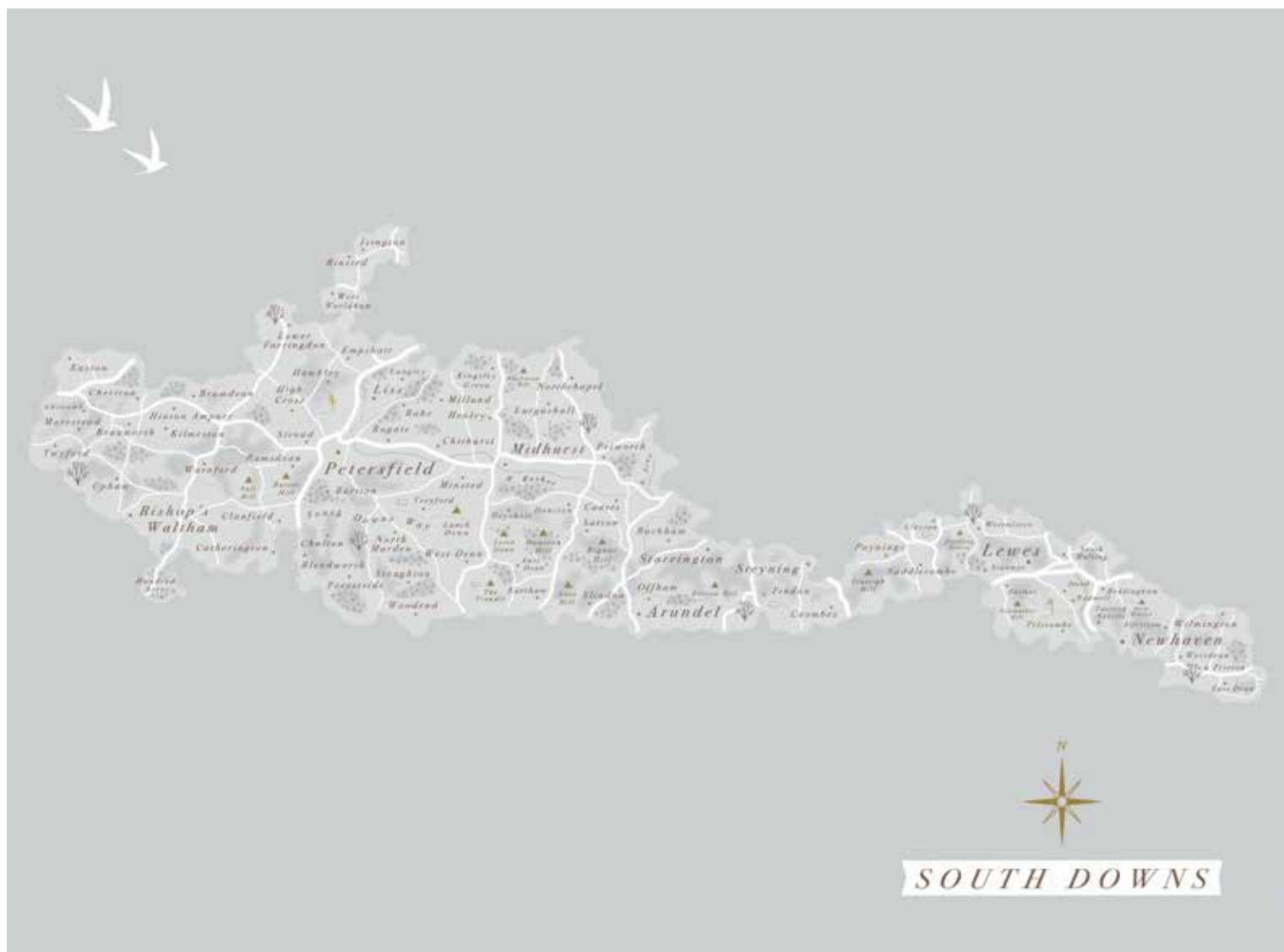
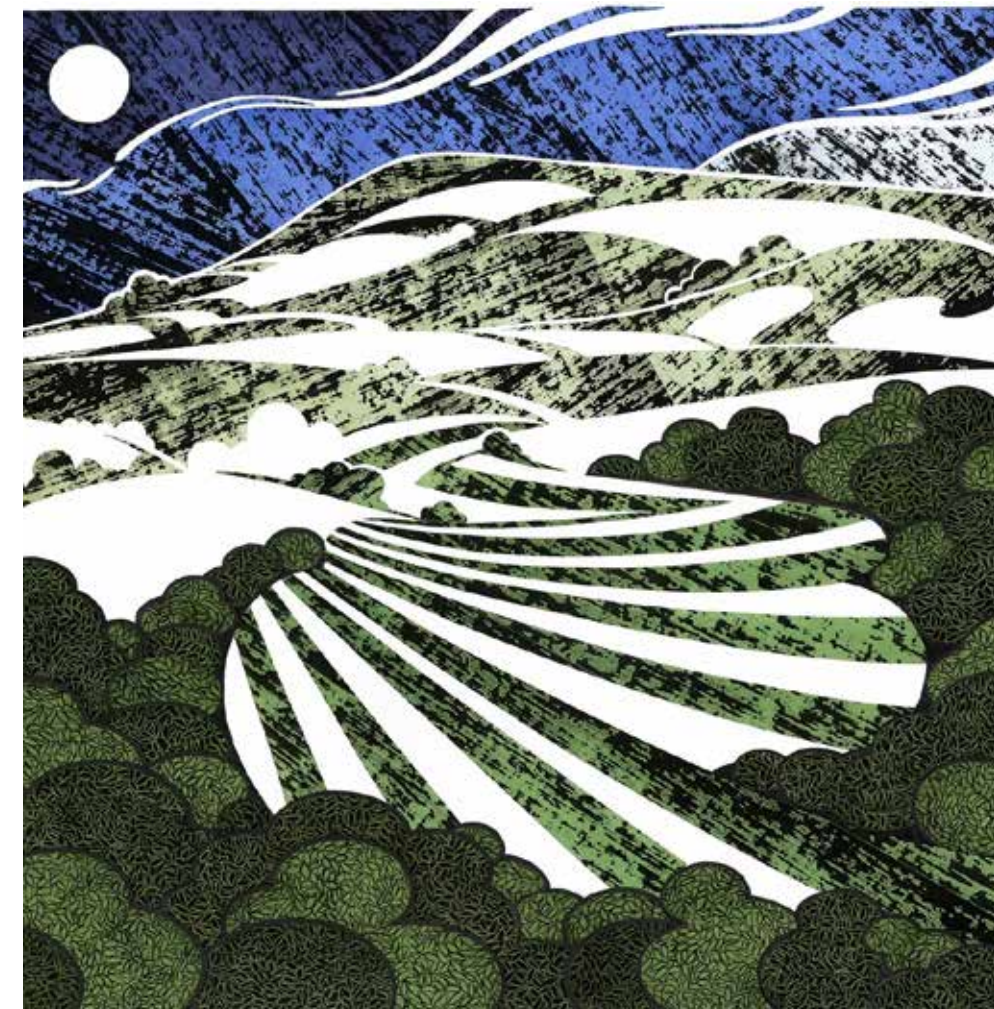


Image courtesy of [www.etsy.com/uk/shop/BritainIllustrated](https://www.etsy.com/uk/shop/BritainIllustrated) © Britain Illustrated 2024



Chris Sedgwick, 'Summer, View from Bury Hill', 2023 © The Artist

**Festive Thursday Late**  
7 November 2024 | 7.00pm-9.00pm | FREE

Enjoy a festive evening at the Museum and Art Gallery as we launch our Christmas stock in the Shop and open late for an evening to purchase high-quality affordable art from the South Downs Open. Find unique gifts for everyone on your list inspired by our exhibitions, collections and the South Downs.

Please note that artworks purchased from the South Downs Open will only be available for collection after the exhibition concludes in February 2025

Book tickets: <https://www.petersfieldmuseum.co.uk>



Holly Hickmore, 'Artemis', 2024 © The Artist

**The Horsewoman**  
22 October 2024 – 3 May 2025  
Collection Display included in admission price

Two superb riding outfits from the early twentieth century are on display from our Fashion and Textiles Collection: a beautifully tailored women's habit for riding side saddle (aside) and a styled woman's jacket and breeches for riding either side, with an apron skirt, or cross saddle (astride). Together, they demonstrate changes in fashion and attitudes in the equestrian world.

We are also proud to display *Artemis*, 2024, a recent bronze sculpture by prominent artist Holly Hickmore. Hickmore is based in West Meon, Hampshire, and her love of the countryside equals her passion for sculpture. Her horse sculptures are renowned for capturing the spirit of power and movement.

## FAMILY EVENTS



### Creative Saturday Family Workshops

26 October, 30 November,  
14 December, 25 January and  
22 February | 10.30am–12.00pm

Check our website for upcoming dates and session themes. Free to attend, but booking in advance is required.

Enjoy our FREE monthly Creative Saturday Family Workshops where you and your little ones can get creative at Petersfield Museum and Art Gallery. Inspired by our exhibitions and collections, explore art techniques, crafting projects and poetry-inspired creations suitable for all ages and abilities.



### Halloween Family Fun Day

26 October 2024  
11.00am-4.00pm  
Normal admission prices | Children  
Under 5: Free

Put on your costume, grab your broomstick and wand and enter Petersfield Museum and Art Gallery if you dare! Celebrate Halloween with ghostly crafts, spooky storytelling and modern twists on traditional games. There is something for all the family!



### The Canterville Ghost

Presented by Don't Go Into the  
Cellar  
2 November 2024  
2.00pm-4.00pm (Doors Open  
1.30pm) | 4.30pm-6.00pm  
(Doors Open 4.00pm)  
Standard: £15 | Child (7-16): £10.00

Get ready for an enchanting blend of comedy and chills in our original adaptation of the charming Oscar Wilde tale, "The Canterville Ghost." Tailored especially for children and young families, this one-man show starring Philip Jennings guarantees to bring more than just a ghost of a smile to everyone's face. Brace yourselves for a performance filled with laughter, audience participation, and a touch of the supernatural!

Suitable for ages 7+



### Brick Fest!

25 January 2025  
10:00am - 4:00pm  
Normal admission prices | Kids go  
free!

Join us as we celebrate international Lego Day and shine a light on our own hometown treasure, Minibrix. Build and create your way through the galleries with craft stations throughout the Museum and Art Gallery. Great for Lego and Minibrix fans of all ages!

## EARLY YEARS

We provide a range of interactive, creative learning sessions for children under 5 and their families. Our programme is designed alongside a child development expert and a teacher, with sessions aimed at improving children's well-being and promoting the development of key skills.



### Museum Mischief Makers

Most Mondays, except bank  
holidays | 10.00am–11.00am  
Check our website for  
upcoming dates and session  
themes.

Free to attend, but booking in  
advance is required.

Join us with your little ones for a unique opportunity to explore the Museum and Art Gallery in an interactive, sensory and sometimes messy way! Activities encourage complete freedom of expression. No rules - just fun!

*We visit every  
week, and the  
sessions are  
always brilliant –  
the kids love it!*

*Parent Participant,  
Museum Mischief  
Makers*



### Toddler Takeover XI: Pumpkin Party

28 October 2024  
10.00am-4.00pm  
Normal admission prices  
Children Under 5: Free

Entertain your little ones with our spooktacular Toddler Takeover Day! Get your groove on at the ghostly disco, hear a spooky take from Count Dracula, decorate a fearsome treat, and create monstrous creations!



### Toddler Takeover XII: Santa's Crazy Christmas

21 December 2024  
10.00am-4.00pm  
Normal admission prices |  
Under 18s: FREE | Booking in  
advanced recommended

Join us for an unforgettable holiday experience for you and your under 5's mischief makers. Let your little ones run around our galleries with festive crafts to take home, Dasher's Dance Disco in our Courthouse, wintertime play in our courtyard and story time with Father Christmas before his big night!

## LIVE MUSIC

Tickets are available to purchase from our What's On webpage, at the Welcome Desk, or on the door (subject to availability). To avoid disappointment, we recommend booking in advance. Our fully licensed bar is open throughout each live music event, located in the Coffee Shop.

### TOBIAH with Colette O'Leary

25 October 2024 | 8.00pm–10.00pm (Doors Open: 7.30pm)  
Standard: £12 | Museum Friend: £10 | Museum Supporter: £10

We are delighted to welcome singer songwriter TOBIAH for a spellbinding evening of songs and stories from her acclaimed album, *Are We Angels*. She will also be performing new music from her next record, with foot-tapping interludes from twice All-Ireland award-winning piano accordionist, Colette O'Leary.

*TOBIAH has the most silky, velvety, ethereal and heavenly voice.*

(Justine Greene, BBC)



### A.D. Scruffs

23 November 2024 | 8.00pm–10.00pm (Doors Open: 7.30pm)  
Standard: £12 | Museum Friend: £10 | Museum Supporter: £10

A.D. Scruffs is a Soul, Roots & Americana band hailing from Bristol, with a foot stomping collection of original songs and a storming stage presence sure to captivate any audience!

Fronted by Jake A.D. and Willygoat Scruff, these two combine their love of folk music from traditions the world over, with a dedication to storytelling through the art of song. From the chiming of the mandolin, the frailing of the banjo and the slide of the dobro, you'll find yourself lost in the soundscape.



### Carols in the Courtyard 7

December 2024 | 4.30pm–6.00pm (Doors Open 4.00pm) Adult: £8.00 | Museum Friend: £7.00 | Museum Supporter: £6.00 | Children: FREE

Join us under the stars for a magical evening of festive joy! Experience the enchanting melodies of carols from Alder Valley Brass echoing through Petersfield Museum's historic courtyard. Save the date for an unforgettable celebration of community and holiday spirit.



Book tickets: <https://www.petersfieldmuseum.co.uk>

## WALKS



### Haunted Petersfield Walk

24 October and 30 October 2024 | 7.15–8.45pm  
Standard: £6.00 | Museum Friend: £5.00 | Museum Supporter: FREE

As Halloween approaches, join us on a ghost walk around Petersfield as we uncover stories of all the things that go bump in the night. From marble playing ghost children to a Civil War hanging, enjoy taking a look at the grizzlier side of Petersfield.

Book tickets: <https://www.petersfieldmuseum.co.uk>

## CREATIVE WORKSHOPS

Learn a new skill, develop your artistic practice or writing smith voice, and enjoy working in a small group within a setting that encourages creativity. All abilities are welcome, 14+, and the price includes all materials.



### Editing Your Writing Workshop with William Sutton

23 October 2024  
7.00pm–9.00pm  
Standard: £40

Tackle this crucial part of the writing process. Pick up specifics tips on how to improve dialogue, layout, structure, character. Bring a section of your writing and discover how seriously writers take editing.  
*"Such a supportive group."  
"Great session again today, thank you."  
"I've found the input on editing particularly useful because it gave objective criteria to cut through the sprawling first draft."*

### Take Your Novel Further 3 Week Writing Course

14 November - 28 November 2024 | 7.00pm–9.00pm  
Standard: £90

Save yourself from the lost hinterlands of a partly written book and get back on track to your goal of submitting a polished manuscript. Gain insight and advise on how to move your manuscript to the next stages of finishing, redrafting, editing, and submitting for publication.

While we won't edit your manuscript or get you an agent, we can help you get out of the end-of-manuscript slump and back on track to achieving your writing goals!

Six writers from previous courses are now published, and two forthcoming.

*"10/10, excellent pace and differentiation, plus advice on plot, characters, structure, editing."*

*"Focused, generous feedback."*

*"Practical advice from a published author."*

## THEATRE

Join us for a one-of-a-kind backdrop for theatre productions hosted in our historic courthouse or outdoor courtyard. Perfect for an intimate performance, get there early to grab the best seat in the house! Remember, our Coffee Shop is open throughout the show as a fully licensed bar. Our wide range of beverages ensures there's something for everyone!



### Ghouls Gallery

Presented by Don't Go Into the Cellar  
19 October 2024 | 4.30pm-6.00pm (Doors Open 4.00pm) | 7.30pm-9.30pm (Doors & Bar Open 7.00pm)

Standard: £15 | Museum Friend: £14 |  
Museum Supporter: £13

Welcome to an unforgettable evening of spine-chilling suspense and hair-raising tales at the Petersfield Museum and Art Gallery. Join us for an anthology stage show featuring some of the greatest tales of terror, masterfully performed and scripted by the award-winning actor, Jonathan Goodwin. Prepare to be captivated by the authentically eerie dramatic storytelling that brings classic tales of terror to life. Experience the thrill of "The Screaming Skull" and the chilling suspense of "The Judge's House" as they unfold before your eyes.

Book tickets: <https://www.petersfieldmuseum.co.uk>



### A Christmas Carol

Presented by Don't Go Into  
The Cellar  
11 December 2024 |  
4.30pm-6.00pm  
(Doors Open 4.00pm) |  
7.30pm-9.00pm (Doors Open  
7.00pm)  
Adult: £12.00 | Children: £8.00

Join the great Victorian novelist Charles Dickens as he brings to life one of the most famous ghost stories of all time. A classic tale of revenants and redemption, hauntings and humbug, seasonal spooks and sentiment. Suitable for ages 11+

## MEMBERSHIP

Join us today and enjoy access to an incredible range of benefits. As an independent museum and art gallery, we do not receive regular funding. Your generous support therefore helps us to maintain our collections for future generations.

### Become a **Friend** of Petersfield Museum and Art Gallery

#### Options

- Individual - £25 a year
- Student - £15 a year

#### Benefits

- Unlimited entry to the Museum and Art Gallery for the duration of your Friend membership
- Invitation to an exclusive Friend and Supporter event
- Discounts on selected Museum and Art Gallery events (*subject to availability and must be booked in advance*)
- 10% discount in the Shop at Petersfield Museum and Art Gallery (*exceptions apply*)
- 15% discount in the Coffee Shop at Petersfield Museum and Art Gallery (*exceptions apply*)
- Regular emails about events and exhibitions

To become a Friend or Supporter, please visit the Welcome Desk or buy online at [www.petersfieldmuseum.co.uk](http://www.petersfieldmuseum.co.uk)

<https://www.petersfieldmuseum.co.uk/support-us>

### Become a **Supporter** of Petersfield Museum and Art Gallery

#### Options

- Individual - £50 a year
- Individual and a Guest - £75 a year\*

#### Benefits

- Unlimited entry to the Museum and Art Gallery for the duration of your Supporter membership
- Invitation to an exclusive Friend and Supporter event
- Discounts on selected Museum and Art Gallery events (*subject to availability and must be booked in advance*)
- 10% discount in the Shop at Petersfield Museum and Art Gallery (*exceptions apply*)
- 15% discount in the Coffee Shop at Petersfield Museum and Art Gallery (*exceptions apply*)
- Free book loans from The Edward Thomas Study Centre at Petersfield Museum and Art Gallery
- Free participation in Museum walks and talks (*subject to availability and must be booked in advance*)
- Monthly treat in the Coffee Shop at Petersfield Museum and Art Gallery
- Invitation to special events
- Regular emails about events and exhibitions

\*To access the benefits, your guest must accompany you to the Museum and Art Gallery.



## VENUE HIRE

Discover the versatile event spaces at Petersfield Museum and Art Gallery, where we offer a range of rooms for rental purposes.

Whether you're in search of a venue for a performance, business meeting, or celebratory gathering, our facilities are at your service. Our catering options are also at your disposal to ensure your guests are delighted with their visit.

For further information, please contact [hospitality@petersfieldmuseum.co.uk](mailto:hospitality@petersfieldmuseum.co.uk) or call 01730 262601



The Courtyard. Picture by Richard Chivers



The Courtroom. Picture by Richard Chivers

<https://www.petersfieldmuseum.co.uk/venuehire>

## PLAN YOUR VISIT

### Opening Times

Open Tuesday to Saturday, 10.00am–5.00pm (Last entry at 4.00pm).

### October Gallery Closure

In preparation for our site-wide exhibition, *South Downs Open*, our galleries will be closed from Tuesday, 8 October – Saturday 19 October 2024.

The Coffee Shop, Shop and the Edward Thomas Study Centre will remain open for normal hours during this time.

The Museum and Art Gallery will fully re-open on Tuesday 22 October 2024, featuring the new exhibition *South Downs Open*.

### Tickets

Purchase admission and event tickets online at [www.petersfieldmuseum.co.uk](http://www.petersfieldmuseum.co.uk) or at the Welcome Desk in the Museum Shop.

All events have individual prices. Please check the What's On section of our website for more details.

### Admission Prices

Adults: **£8.00**

Age 60+ / Unwaged / Disability / Military / NHS: **£7.00**

(Proof of discount may be required)

Under 5s: **Free**

Child (aged 5-11): **Free**

Young Person (aged 12-17): **Free**

Students: **£5.00** (Proof of discount may be required)

Carer / Companion: **Free**

The Art Fund: **£4.00**

Museum Association: **Free**

### Getting Here

Petersfield Museum and Art Gallery is housed in the old Police Station and Courthouse on St Peter's Road in the centre of Petersfield.

### Address

Petersfield Museum and Art Gallery, St Peter's Road, Petersfield, Hampshire, GU32 3HX

### By Car

Petersfield is easily accessible via the A3 or the A272. Parking is available at the nearby pay and display car parks by Tesco or Waitrose supermarkets.

### By Rail

Petersfield is easily accessible by rail, and the Museum and Art Gallery is only a 10-minute walk from Petersfield Station. Follow Lavant Street (opposite the station) exit to the end, and then turn right onto Chapel Street. This takes you out onto The Square. St Peter's Road is in the opposite corner of The Square, between Café Nero and St Peter's Church.

### By Bicycle

Petersfield is a great starting point for exploring the South Downs by bicycle. We have a range of South Downs leaflets and trails in the Shop to help you start your adventure!

### Accessibility

We want everyone who visits Petersfield Museum and Art Gallery to enjoy the building, collection and exhibitions. If you require any further information, please call 01730 262601.

### Wheelchair & Buggy Access

The Museum and Art Gallery site is fully accessible for wheelchair users and buggies, but at a certain point during your visit you will have to double back to avoid some stairs located at the end of the Petersfield Gallery. A member of staff will provide further guidance on your arrival.

A wheelchair is available free of charge from the Welcome Desk.

Wheelchairs/Buggies can be left near the Welcome Desk during your visit but are left at the owner's own risk.

### Hidden Disabilities

We welcome and support visitors who choose to wear a Sunflower item as part of the Hidden Disabilities Sunflower scheme. We have some Sunflower items available at the Welcome Desk if you would like to pick up something.

### Service Dogs

All service dogs are welcome throughout Petersfield Museum and Art Gallery.

### Accessible Toilet

There is an accessible toilet by the Welcome Desk near the main entrance, and also in the Courthouse.

### Baby-Changing Facilities

Baby-changing facilities are available in the accessible toilet in the Shop, and also in the Courthouse.

### Accessible Parking

There is one accessible parking space at the front of the Museum and Art Gallery which is available for visitors with mobility issues. Unfortunately, this space cannot be booked in advance.

### Seating

There are benches located around the Museum and Art Gallery where you can sit and contemplate, with further seating available in the Courtyard.

### Accessible Resources and Displays

A fixed hearing loop is available at the Welcome Desk. Large-print labels are available in each of the galleries and temporary exhibitions.

### SEND Resources

We offer several resources for visitors with SEND (Special Educational Needs and Disabilities). To access these, please visit: [www.petersfieldmuseum.co.uk/visit/accessibility](http://www.petersfieldmuseum.co.uk/visit/accessibility)

### Contact Us

[visitorexperience@petersfieldmuseum.co.uk](mailto:visitorexperience@petersfieldmuseum.co.uk)  
Telephone: 01730 262601  
Twitter: @PfieldMuseum  
Facebook: @petersfieldmuseum  
Instagram: @petersfieldmuseum





Petersfield  
MUSEUM   
and ART GALLERY

Project support from Arts Council England

